



**NORTHERN SUNRISE
COUNTY**

We've got it all!



ALUS

Canada

A Weston Family Initiative

ALUS Canada in Northern Sunrise County

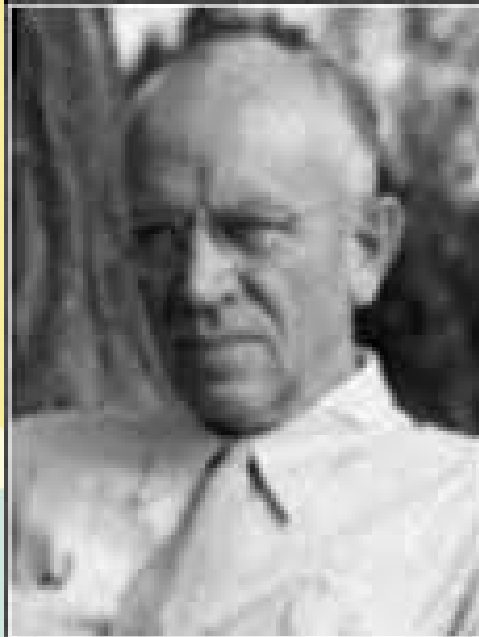
Water North Coalition – Kakut Lake, AB
Thursday, July 25, 2019
Becky Devaleriola, ALUS Program Coordinator





**“Conservation will
ultimately boil down to
rewarding the private
landowner who
conserves the public
interest.”**

Aldo Leopold, 1934

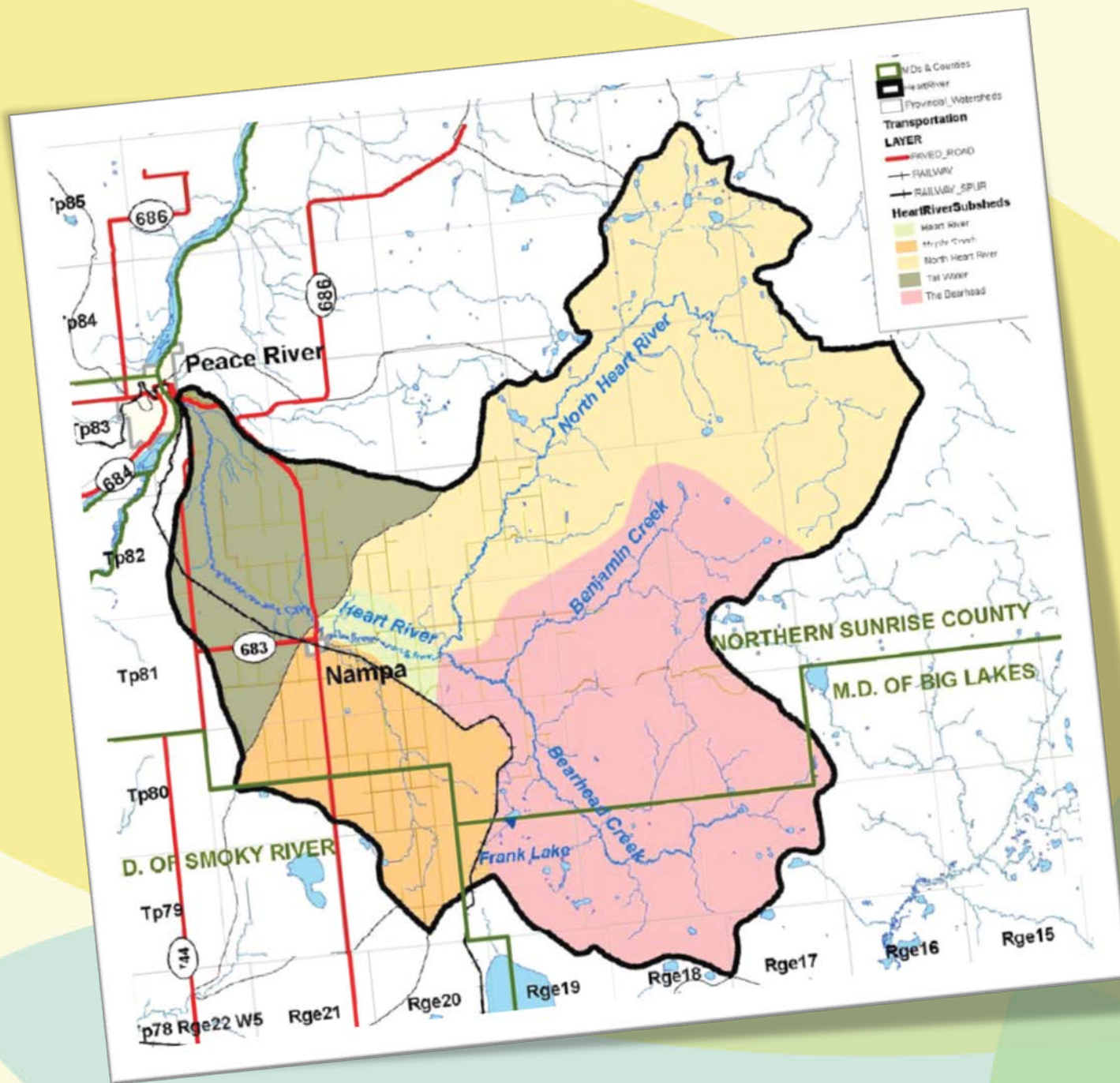


**Harmony with land is like harmony
with a friend; you cannot cherish his
right hand and chop off his left.**

— Aldo Leopold —

AZ QUOTES





The Primary Objectives of The 2009 Heart River Water Action Plan

Provide safe, sustainable, and secure drinking water supply

Reduce nutrient, bacteria and pesticide loadings to the river and its' tributaries

Improve wildlife and fish habitat

Improve the health of the aquatic environment through riparian health and wetland management

Increase public awareness and engagement of land stewardship activities

Promote best management practices to minimize impacts to water quality and wildlife habitats



- T
d
s



- stream bank fencing



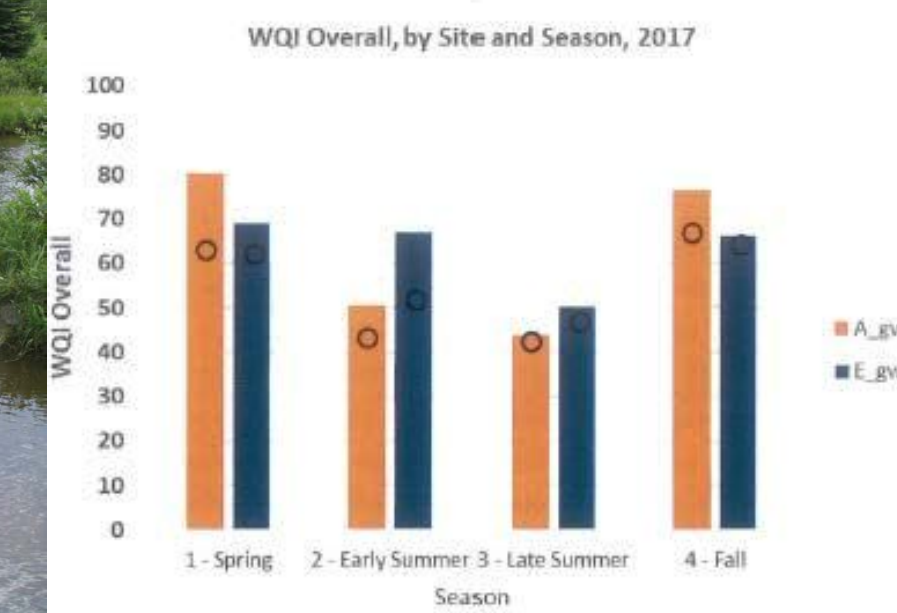
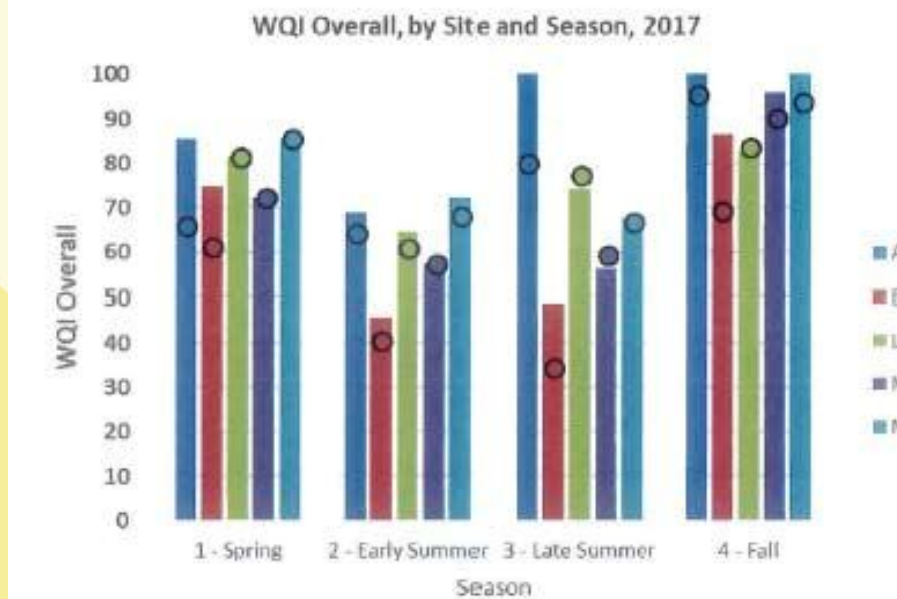
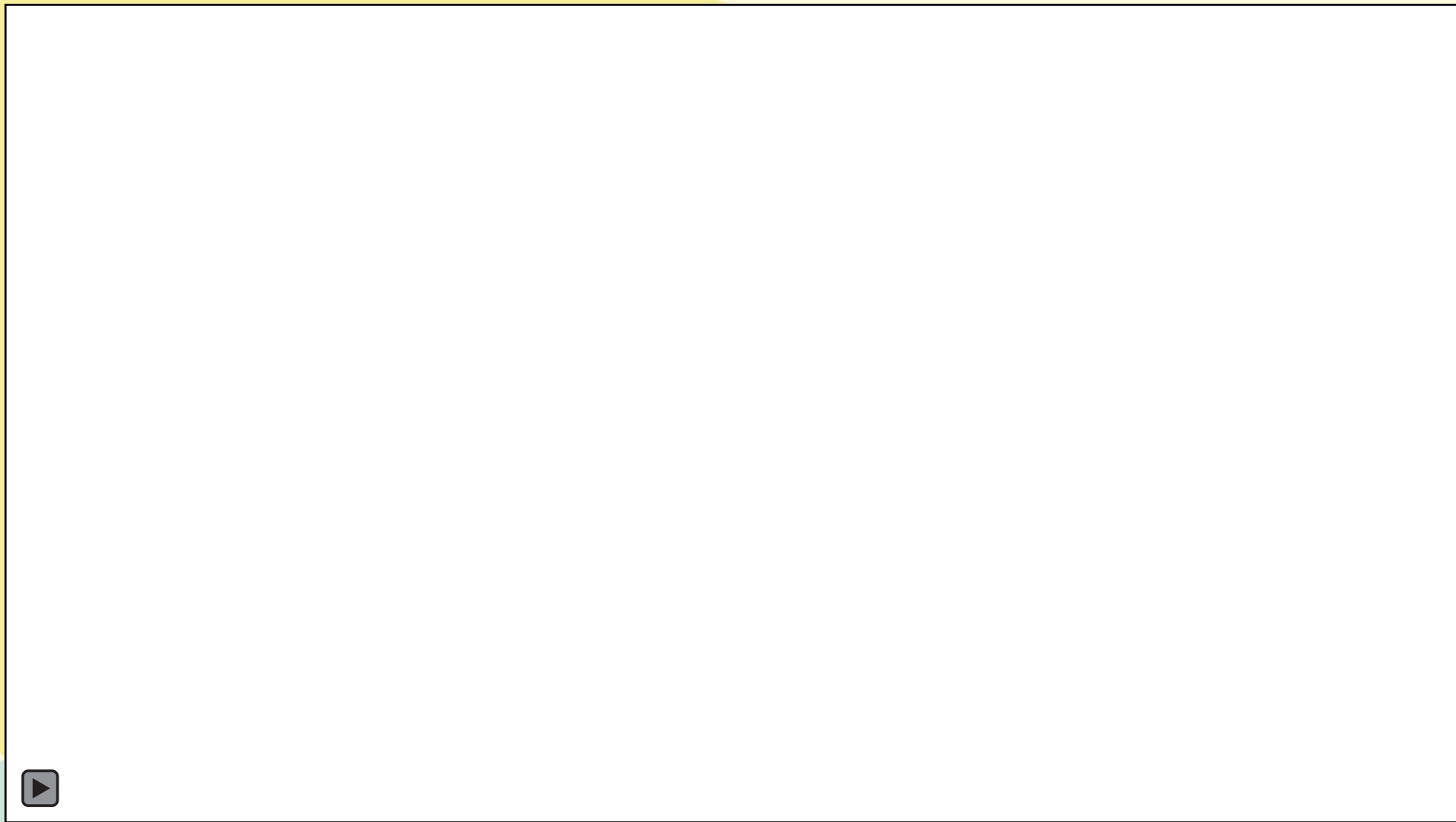


Figure 2. Heart River watershed including officially named watercourses and 2017 sampling locations.



WHAT IS THE ALUS PROGRAM





WHAT IS ALUS?

ALUS Canada, A Weston Family Initiative, is a national program helping farmers and ranchers to produce cleaner air, cleaner water, more biodiversity and other ecosystem services in their communities. As a recent Alberta Emerald Award-winner—and guided by a Clean50/Clean 16 award-winning team—ALUS Canada is a recognized leader in sustainability that is revolutionizing the way Canadians support the environment.

And when we look at ALUS by the Numbers, we see...

ALUS Canada by the Numbers

Snapshot of ALUS Canada's impact on the ground

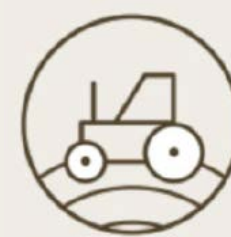
As at April 1, 2019



ALUS active in 6 provinces



25 ALUS communities
+4 since last year



742 farmers & ranchers
participate in ALUS
+213 since last year



19,197 acres of wetland
related ecosystems
+4,355 since last year



17,862 acres of
pollinator habitat
+4,375 since last year



4,240 acres reforested
with native trees and shrubs
+793 since last year



23,694 acres of land
enrolled in ALUS
+5,391 since last year



Nearly \$8.1 M invested
by ALUS Canada
+1.6 M since last year



Farmers, ranchers and
communities multiply our
investment on the ground

ALUS.ca







WHY IS ALUS SO POPULAR IN ALBERTA?

- + Coalition of the willing – farmers who want to do good
- + Municipalities that are eager to solve problems
- + Agricultural Service Boards approving new policy
- + Market mechanisms that make the world go around
- + Awesome people (like you!)

= The key to success that we all benefit from 😊



ALUS CORE PRINCIPLES

1. Farmer-delivered
2. Community-developed
3. Integrated
4. Targeted
5. Accountable
6. Science-based
7. Voluntary
8. Market-driven





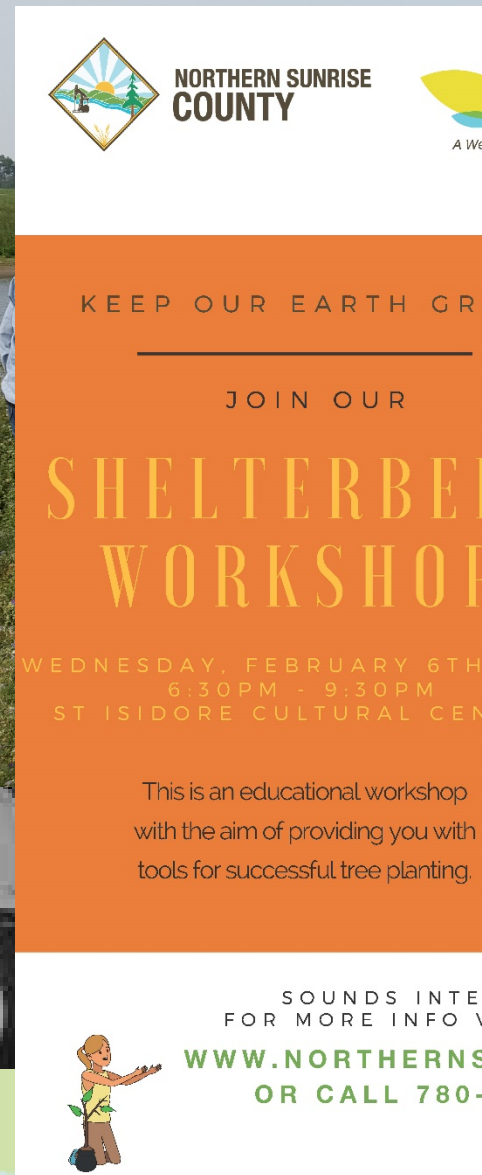
ALUS PROCESS

1. Outreach
2. Site Visit
3. Project Proposal
4. PAC Review
5. Contract Signing
6. Project Establishment
7. Acreage Monitoring
8. Project Verification
9. Annual Payment

OUTREACH

- Annual Ag Tour
- County & NGO Website
- NSC Workshops & Events
- NGO Workshops & Events
- Social Media – Twitter
- County & NGO News
- Trade Shows
- Printed material
- Shelterbelt Program

We are striving to create an opportunity for 1-on-1 contact with the producer.



NORTHERN SUNRISE COUNTY

KEEP OUR EARTH GREEN


JOIN OUR

SHELTERBELT WORKSHOP

WEDNESDAY, FEBRUARY 6TH
6:30PM - 9:30PM
ST ISIDORE CULTURAL CENTRE

This is an educational workshop with the aim of providing you with tools for successful tree planting.

SOUNDS INTERESTED FOR MORE INFO VISIT
WWW.NORTHERNSUNRISE.NET
OR CALL 780-322-3831



NORTHERN SUNRISE COUNTY
We've got it all!

ALUS Canada
A Northern Family Initiative

AWES
Agriculture & Wildlife
Education Society

Bumblebee House Building Workshop

BEE A FRIEND and create your very own mini bee sanctuary, providing a safe habitat for our friends!

Thursday, February 7, 2019 at 6:30 pm

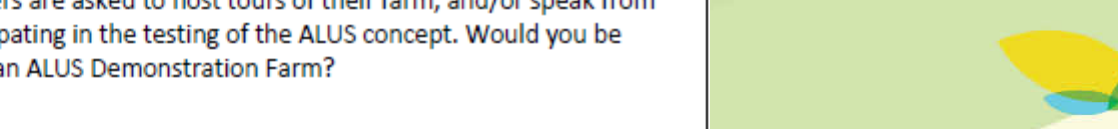
FOR ALL THE BUZZZZZ....
PLEASE VISIT
WWW.NORTHERNSUNRISE.NET
OR CALL (780) 322-3831





ALUS Canada Prairie Hub and Western Hub (Manitoba, Saska

PERSONAL INFORMATION (please fill in all sections)			
Applicant Name:			Date (DD-MM-YY):
Mailing Address:		City:	Province:
Phone:		Cell:	
Email:		Email for ALUS e-newsletter:	
Website:		Farm Facebook page? (Y or N)	Twitter handle: @
Tax Roll No.:		Farm Registration No.:	
SIN No.:		How many acres do you farm?	
Farm/Ranch Description			
Legal Land Description:			
Farm Address (if different from above):			
Farm Name (if applicable):			
What is/are the main commodity(ies) produced on your land?			
What is the total area of your land, in acres?			
Of this total, how many acres are:			
Woodlot?	Pasture?	Cultivated?	Other? (describe)
What is the soil type and quality on your land?			
Site Visit/Form Completion			
Would you be interested in a site meeting on your land to review environmental opportunities and/or assistance with completing this form? (Y or N)			
If yes, when are you available:			
How did you hear about ALUS?			

PERSONAL INFORMATION (please fill in all sections)					
Applicant Name:				Date (DD-MM-YY):	
Mailing Address:		City:		Province:	Postal Code:
				US e-newsletter (if different):	
Total Farm Plan (EFP)		Date of workshop? (month, year):		Twitter handle: @	
Farm/ranch that was deemed appropriate through peer review process:				Registration No.: How many acres do you farm, including rented lands?	
What motivated your interest in enrolling in the ALUS program?					
Additional information about your land or plans that would improve the environment or enhance wildlife habitat? (Attach a separate sheet if more space is needed.)					
Would you like to showcase multiple ALUS-funded projects on one farm. Farms are asked to host tours of their farm, and/or speak from experience regarding testing of the ALUS concept. Would you be interested in being part of an ALUS Demonstration Farm?					

PROJECT PROPOSAL AND PAC REVIEW

- Coordinator takes information from meeting and prepares a proposal
- Present project to the Partnership Advisory Committee (PAC)
- Project reviewed and scored using the P.E.A.T. (Program Eligibility Assessment Table)
- Project score will determine the priority of the project.

P.E.A.T.

12-Mar-18



PROGRAM ELIGIBILITY ASSESSMENT TABLE

PROJECT #:	NSC-00038K-C0039-2018-01-025
PROJECT DESCRIPTION:	Wetland Conservation, Education, Research
WATERSHED:	Heart River Watershed

Notes: 150 acres total; what type of project; how many acres to enter into ALUS (10%?); \$25/acre

POINTS

Ranking Priority #5

Applicant:	2 Producer	1 Acreage (10 acres)	0 Landowner	0		
Project size	0 0 - 0.59 acres	2 0.6 - 2.49 acres	3 2.5 - 9.9 acres	2 10 - 39.9 acres	0 40 - 160 acres	0
Applicant's Contribution:	12 80 - 100 %	9 60 - 79.9 %	6 40 - 59.9 %	3 20 - 39.9 %	0 0 - 19.9 %	0
Project Location:	3 Restoration	2 New Area	2 Marginal Land	1 Protected Area	3 Existing Wetland	3
PROJECT BENEFITS (add all applicable benefits)						BONUS POINTS
Positive Impacts:	1 Wildlife Habitat	2 Riparian Creek	3 Pollinator Habitat	3 Wetland Water Storage		3
Additional Benefits:						
TOTAL POINTS*						6

COST BENEFIT RATIO

POINTS	Level
1 - 4	Four
5 - 9	Three
10 - 14	Two
15 +	One



PARTNERSHIP ADVISORY COMMITTEE (PAC)

5 Voting Members

- 1 NSC Councilor
- 4 Members at Large

Our PAC is comprised of a diverse group of people whom advise on local program direction and objectives, while supporting the program locally.

13 Non-voting Advisors

- Director of Agriculture Services (NSC)
- ALUS Hub Manager (AB)
- Development Officer (NSC)
- Environmental Consultant
- Ag Fieldmen & Councilor's from neighboring MD's
- NGO partners



CONTRACT & PROJECT ESTABLISHMENT

1. Producer signs a 10-year voluntary Project Maintenance Agreement
2. ALUS and Partners (NSC, GOA, NGO's) often fund 50% or more of project costs through various grant opportunities and in-kind services.
3. Project establishment can begin once funding has been determined.
4. The vision becomes reality 😊

To PARTICIPANT:

Address:
E-mail:
Attention:

Participant: SMITH
Contract Date:
PROPERTY DESCRIPTION
Roll Number

PROJECT DETAILS

Original	ProjectID
Contract	
Year	
2016	PAR-000015-C0001-201
2016	PAR-000015-C0001-201

PROJECT DESCRIPTION

Project ID
PAR-000015-C0001-2016-01-01
PAR-000015-C0001-2016-02-02



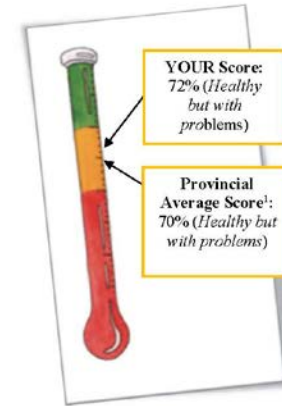
MONITORING

- Within the first-year of establishment, new projects are assessed for baseline condition by a 3rd party consultant.
- Report provides an assessment on the riparian or range health, photo points, problem areas, recommendations and more!
- This type of assessment is required every 5 years.
- Monitoring between these milestones will be completed by the Program Coordinator using in-house tools.

Cows and Fish

Alberta Riparian Habitat Management Society

Riparian Health Summary Report 2016 ABC Farm Heart River



A Riparian Health Inventory is a tool designed to help individuals like you evaluate and understand the health of riparian areas within your landholdings.

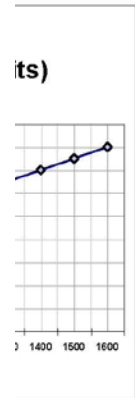
This summary report provides information on the current health of your riparian area along the Heart River in 1-23-45W5M based on data we collected on August 28, 2016. This information is intended to help direct your efforts to promote important riparian functions such as improved water quality, forage production, and fish habitat. This riparian health inventory was initiated by Cows and Fish and the Heart River Watershed Restoration Plan Project Team, with funding from Alberta Eco-Trust along with support from Cows and Fish and Northern Sunrise County, as part of the monitoring for your planned riparian improvement project. In total, four sites were assessed within the Heart River watershed this year.

Your site scored 72% (healthy but with problems), slightly above the provincial average of 70%¹. An explanation of your score begins on page 2.



E. Schell, RHIP01HEA014

¹ Cows and Fish Riparian Health Inventory Data 1996 – 2015. Based on 2,497 sites, on 613 waterbodies in Alberta.





ANNUAL PAYMENTS AND VERIFICATION

- ALUS pays annual payment for management of new ecological services determined by local land rental rates.
- For example - NSC is paying
 - \$30/acre for pasture
 - \$60/acre for cropland
 - \$15/acre for existing forest
 - \$50/acre wetland (ephemeral in cropland)
- 10% of projects are verified each year by third party consultant



FINANCIAL REPORTING REQUIREMENTS

ALUS Canada reporting periods:

- Interim Reports – due July
- Projected Acres – due November
- Year-End Reports – due January

Other Funders:

- Dependent upon individual grant requirements.
- Aim is to duplicate ALUS reporting.

And then we start planning for the next year 😊

10/07/2018
ALUS
Canada
A Grassroots Initiative

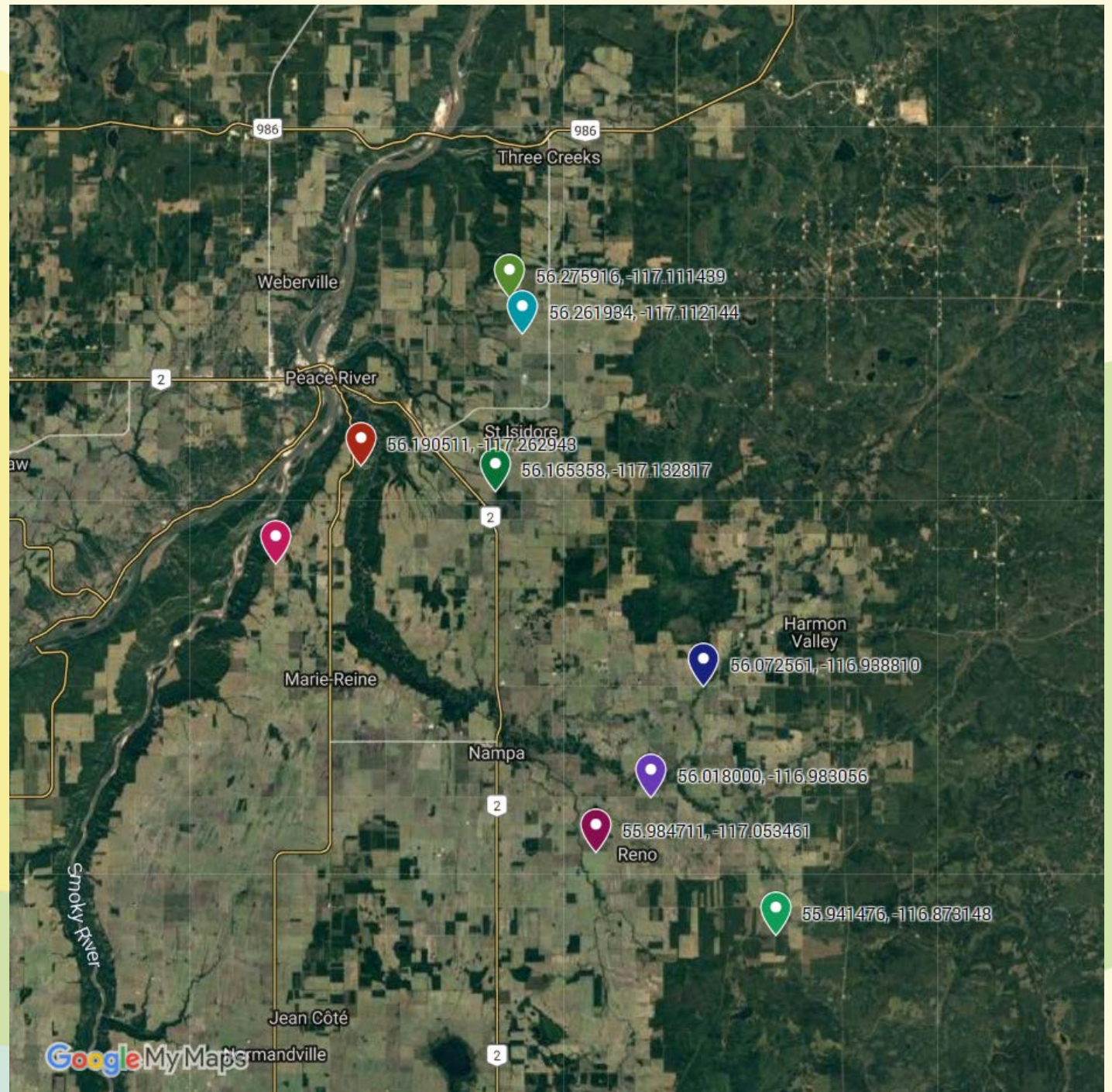
2018 ALUS INTERIM STRATEGIC PLANNING REPORT
Objectives and Results
NORTHERN SUNRISE COUNTY

Your plans, objectives and results help showcase the ALUS program and will be used for reporting back to funders.
If your ALUS Program does not have specific objectives for an item, be sure to still report any applicable results in column E.

2018		SPECIFIC OBJECTIVES (For your planning purposes) Planned or targeted objectives and activities	RESULTS Actual outcomes and activities	Notes	Hub Manager's Notes/Comments
SPECIES AT RISK	What kinds of structures were made available to support SAR?	n/a			
	What SAR were observed? - List all SAR that were observed	n/a			
	What evidence of SAR were detected (includes SAR sightings)? - Tracks? - Dens or nesting structures? - Songs confirmed by expert? - etc.	n/a			
PARTNERSHIP/SPONSORSHIP	NEW Partnerships established SO FAR THIS YEAR - - List any NEW partnerships established so far this year including partnerships with local conservation groups, NSC or other orgs, individual, government, etc.	- Emlio Tech - The Carbon Farmer - Woodmere Nursery - BioComposite Group - GSA Environmental Protection Officer - Wetlands Specialist	- Emlio Tech - local environmental company to assist program with baseline reporting, tree planting plans, and planting. Owner extended riparian workshop to get a feel of the work we are doing. They are interested in working with us. - The Carbon Farmer - local seedling supplier - Woodmere Nursery - local supplier of NSC Stakes/whip program - BioComposite Group - Alberta company producing HEMP Weed Suppression Mats - GSA Environmental Protection Officer - Wetlands Specialist - Education Focus		Great new partnership!
	List any other examples of community invested in your local ALUS growth such as: - Local school groups - Eco-tours, tree planting - etc.	- Join for Forest Ranger Program in Slave Lake & Peace River July 12, 2018 Tree Planting at NSC-0004-0009-2017-01-058 & NSC-000384-0009-2018-01-025 Download link to your spreadsheet.xlsx		NCS and other collaborative partnerships with: - Cows & Fish - AWES - Mighty Peace Watershed Alliance (MPWA) - Peace Country Beef & Forage Assoc. (PCBFA) - SATDA - Woodmere Nursery	How the youth impact!
	Tours Hosted/Co-Hosted/Planned - How many tours did you host/co-host so far this year? - With whom? - How many people attended? - Provide details, highlights & photos - What tours are scheduled/planned for later this?	- 2018 Ag Stewardship Tour - Sat, August 18th Registered tour with Alberta Farm Days Download link to your spreadsheet NSC website			

ALUS PROJECTS IN NORTHERN SUNRISE

Although our program is
in its' infancy, we have
9 participants involved in
15 projects producing
136 acres of
ecosystem services
like clean air, clean water and
biodiversity.
Valuable benefits for everyone!



FUNDING SUPPORT



**NORTHERN
SUNRISE
COUNTY**



Environment and
Climate Change Canada

Environnement et
Changement climatique Canada

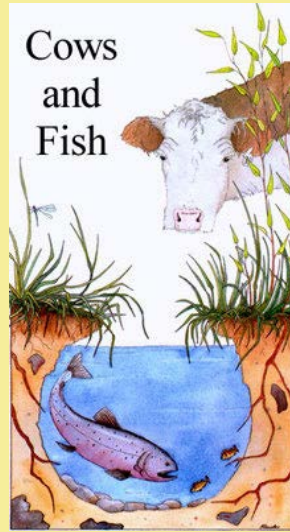




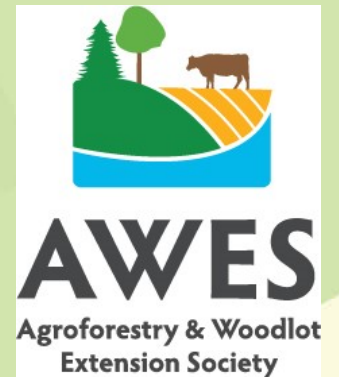
PROJECT PARTNERS



NORTHERN
SUNRISE
COUNTY



WEARTH®





BOOTS ON THE
GROUND...
MAKING A
DIFFERENCE
ONE ACRE AT A TIME



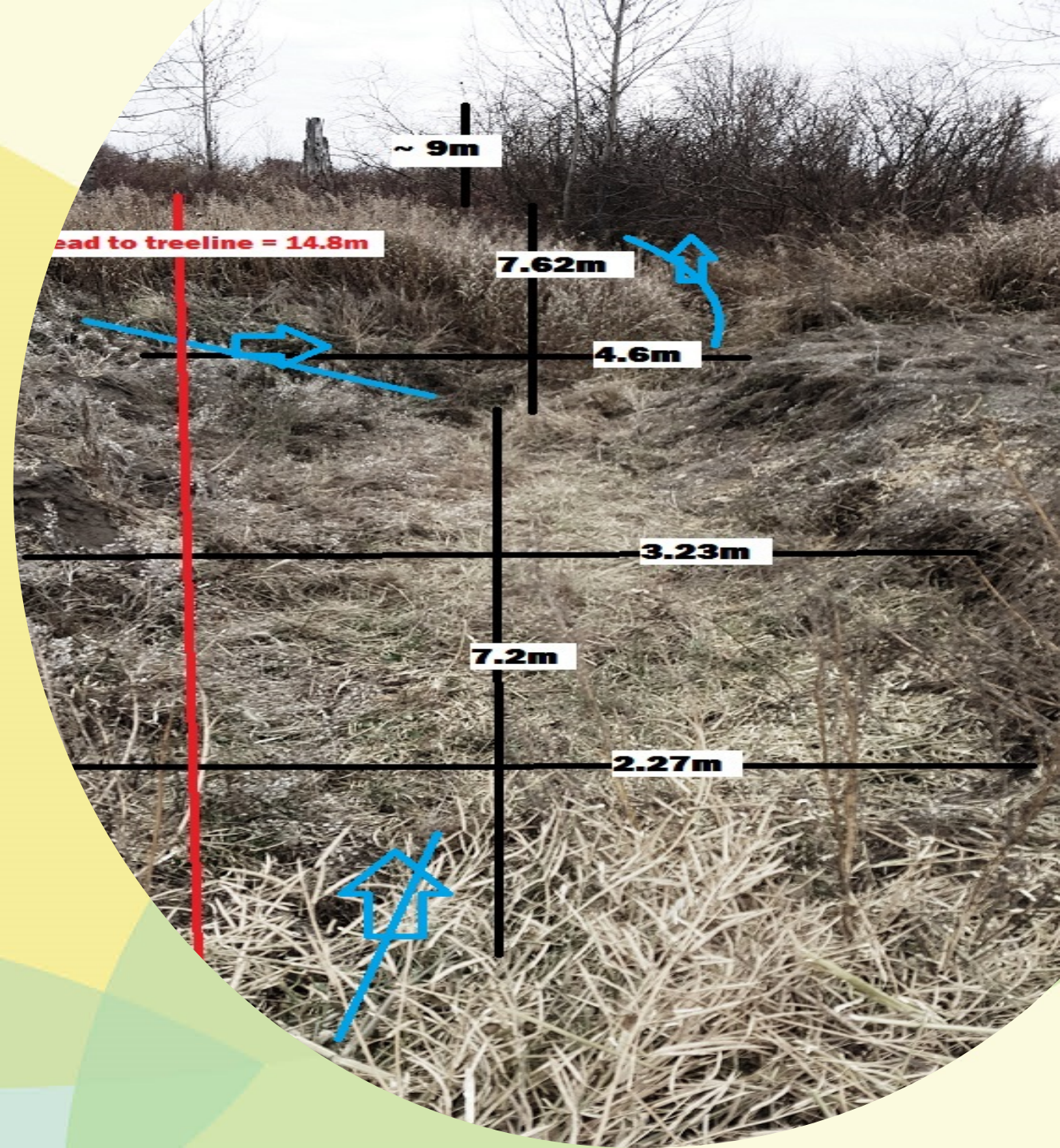


Riparian Enhancement Project OCTOBER 14, 2017 - Current



PROJECT OVERVIEW

- Project: Soil Conservation, Setback Cropping with Riparian Buffer Enhancement
- Area: ~5 acres/ 585 meters of riparian buffer have been removed from production
- Purpose: Soil conservation, bank stabilization, and cleaner water.
- Size: 7.5m L x 2m–4.5m W x 1m D
- Participant: Large scale grain farmer with many acres bordering the Heart River





A photograph of a river flowing through a snowy landscape. The river is dark and turbulent, with visible ripples and small waves. The banks are covered in a thick layer of white snow. In the background, there are many bare, thin trees and some darker, denser shrubs. The sky is a pale blue with some light clouds. A large, dark circular graphic is overlaid on the left side of the image, containing the date.

**APRIL 23,
2018**

JUNE 16, 2018



JULY 10, 2018





AUGUST 18, 2018





OCTOBER 23, 2018





JUNE 13, 2019



“The strength of the team is each individual member. The strength of each member is the team.” – Phil Jackson





Questions?

Becky Devaleriola
ALUS Program Coordinator
Northern Sunrise County
(780) 322-3831
ALUS@northernsunrise.net
www.alus.ca

